

Ecovac cylinder vacuum cleaners

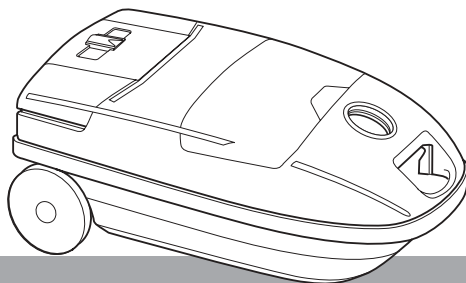


Please read and keep these instructions



UK
Helpline 0870 060 2604
Replacement parts 0870 167 6635

Ireland
1800 409119



getting the best from your new cleaner...

If your cleaner is not picking up as well as it should, please check

- **Filters**

It is important that the filter is cleaned regularly to allow air through the appliance. Shake to remove dust, the filter can also be washed in warm water and left to air dry.

IMPORTANT - Ensure filter is totally dry before refitting into machine.

- **Blockages**

Check the hose, handle and tools for blockages.

- **Overheating protection**

The cleaner automatically cuts off in the event of overheating caused by blocked hoses / filters. Remove plug, clear blockage and allow 15 minutes for the cleaner to automatically reset.



Important safety instructions

The use of any electrical appliance requires the following common sense safety rules.

Primarily there is danger of injury or death and secondly the danger of damage to the appliance. These are indicated in the text by the following two conventions:

WARNING: Danger to the person!
IMPORTANT: Damage to the appliance! In addition we offer the following safety advice.

Location

- Do not use or keep this product outside when it is raining.
- Do not store the appliance near hot ovens or heating appliances.

Children

- Children do not understand the dangers associated with operating electrical appliances. Never allow children to use this appliance.

Personal safety

- The plug must be removed from the wall socket before cleaning or maintaining the appliance.
- Never modify the cleaner in any way.

Other safety considerations

- Never use in the presence of explosive liquids or vapours.
- Never pick up inflammable or poisonous liquids such as petrol, copier toner or other volatile substances. Never pick up acids, asbestos or asbestos dust.
- Repairs to electrical appliances are only to be undertaken by trained personnel. Unprofessional repairs can be dangerous for users.
- Use only genuine Morphy Richards spare parts and accessories.

- If the electrical cable becomes damaged the complete cable assembly must be replaced. Do not attempt this task yourself, contact Morphy Richards using the replacement parts number on the front of this leaflet.
- The appliance must never be left running when unsupervised.
- This vacuum cleaner is intended for domestic use only. Misuse or use for commercial or any other purpose will render the guarantee invalid.
- Always disconnect the appliance from the mains supply after use or prior to cleaning or replacing the airbox or filters.

Product safety

- Never use the appliance without the airbox or filters being installed.
- Never use the appliance to vacuum hot ashes, broken glass or sharp objects.
- Never modify the cleaner in any way.
- To protect against fire, electric shock and personal injury do not immerse cord, plug or cleaner in water or other liquid.

Electrical requirements

Check that the voltage on the rating plate corresponds with your house electricity which must be A.C. (alternating current).

If the socket outlets in your home are not suitable for the plug supplied with this appliance the plug should be removed and the appropriate one fitted.

If you cut off the plug and let go of the cable it will rewind into the machine. Therefore you must pull out a length of cable and secure it before cutting off the plug and refitting a new one.

IMPORTANT: The plug removed from the mains lead, if severed, must be destroyed as a plug with a bared flexible cord is hazardous if engaged into a live socket outlet.

Should the fuse in the 13 amp plug require changing a 13 amp BS1362 fuse must be fitted.

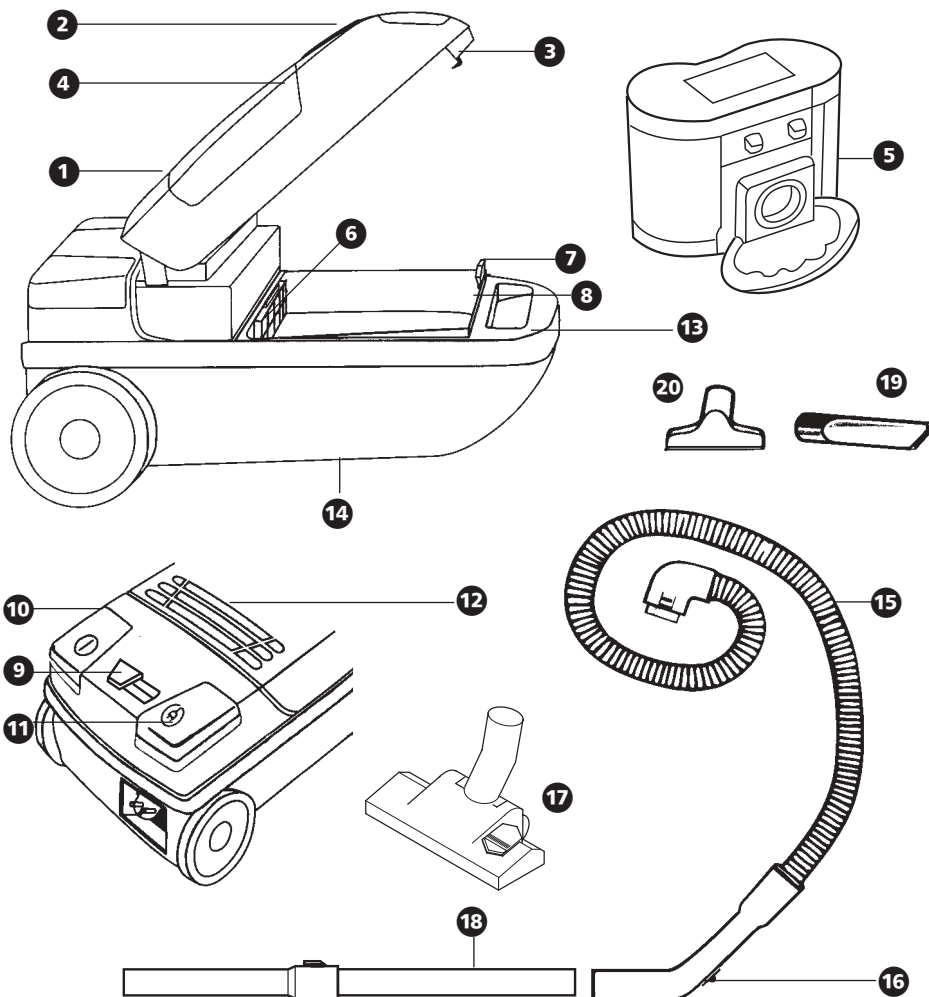
Features

- 1 Dust compartment cover
- 2 Opening for suction hose
- 3 Dust compartment lock button
- 4 Tool storage compartment cover
- 5 Airbox
- 6 Reusable washable filter
- 7 Safety lock
- 8 Slot for airbox location
- 9 Variable power

- 10 On/off foot switch
- 11 Cable rewind foot switch
- 12 Reusable exhaust filter
- 13 Carrying handle
- 14 Tube park (not illustrated)

Accessories you should have

- 15 Suction hose with 360° swivel connector
- 16 Handle with fingertip air flow control
- 17 Floor nozzle
- 18 Telescopic metal tube
- 19 Crevice tool (inside compartment)
- 20 Upholstery nozzle (inside compartment)



Tools and accessories

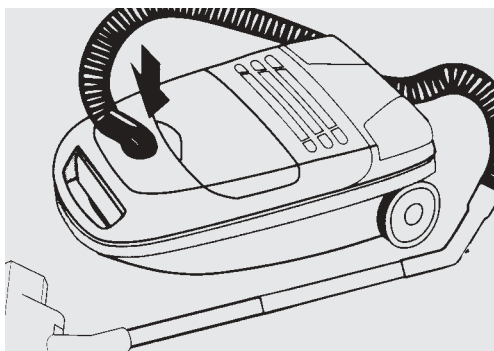
Accessories used	Application
	 Curtains and delicate fabrics
	 Textiles and upholstery
	 Carpets and other textile floor coverings Button  position on floor brush
	 Power settings for heavy dirt and smooth floors  Button position on floor brush

Operation

Suction hose

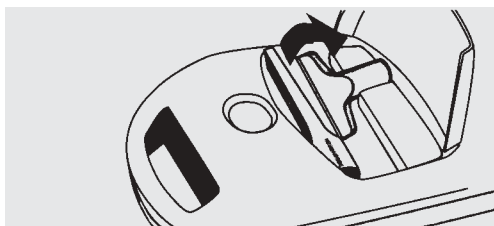
Snap the 360° rotating head on the suction hose into the suction hose opening on the vacuum cleaner.

The appropriate cleaning tool can be attached directly to the other end of the suction hose or the connecting tube can be used between the suction hose and the tool.



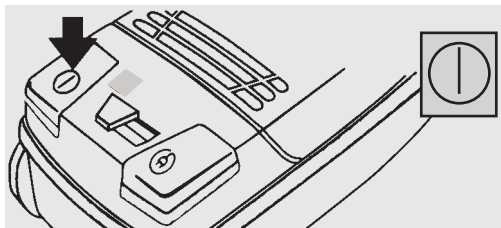
Tool storage

The crevice tool **19** and the upholstery nozzle **20** are stored in the internal storage compartment.



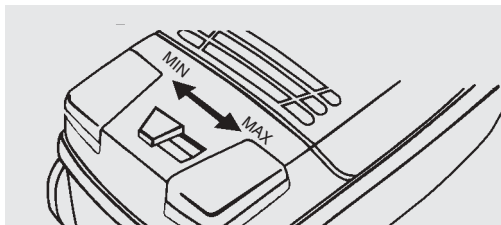
Switching on

Pull out the supply cable to its maximum length and plug the appliance into the mains supply. Push the on/off foot switch to start the motor.



Controlling suction power

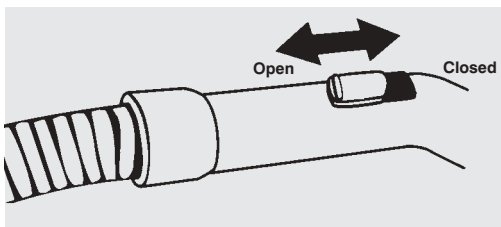
The suction power can be varied to suit the surface being cleaned, by using the electronic suction power regulator. See table for guideline settings.



The suction power can also be controlled on the hose handle.

Closed: full suction

Open: low suction



Overheating protection

In the event of a motor overload, your vacuum cleaner will switch off automatically. Press the on/off switch and let the motor cool down.

The vacuum cleaner cuts out automatically when:

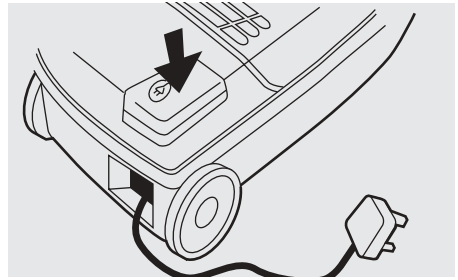
- The floor nozzle or tubes become blocked
- Using the vacuum cleaner with a full air box.
- The airbox filter is very dirty
- The motor protection filter is very dirty
- The exhaust filter is very dirty

Rectify the cause of the cut out and do not use for 15 minutes to allow the motor to cool.

Power setting	Application
	<p>Curtains and delicate fabrics</p>
	<p>Textiles and upholstery</p>
	<p>Floor coverings such as rugs or economy setting for carpets</p>
	<p>Carpets or hard floor coverings</p>

Switching off

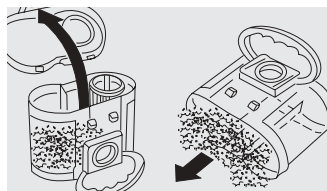
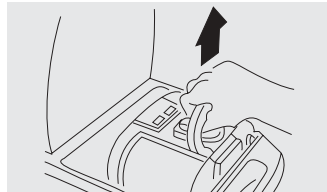
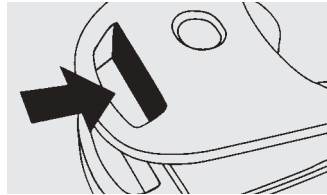
Switch off the appliance. Remove the plug from the mains supply and rewind the power cable using the cable rewind foot switch. **CAUTION:** When using the cable rewind, always hold the plug as the cable will rewind quickly.



Emptying the air box

To maintain the performance of your vacuum cleaner the airbox must be emptied regularly and the filters cleaned.

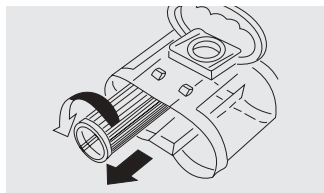
- Press the dust compartment lock button **3** and lift up the dust compartment lid.
- Holding the handle on the airbox lift upwards and remove the airbox from the machine. Take the airbox to the dustbin.
- Unclip the airbox lid as shown (from the handle side first). Place the lid to one side and empty the contents of the airbox into the dustbin.



Cleaning the airbox filter

IT IS IMPORTANT TO CLEAN THE FILTER TO MAINTAIN PERFORMANCE, EVERY TIME THE AIRBOX IS EMPTIED.

- After emptying the dust, twist the filter anti-clockwise to remove as shown.
- Tap the filter over a dustbin to remove excess dust.



Washing the airbox filter

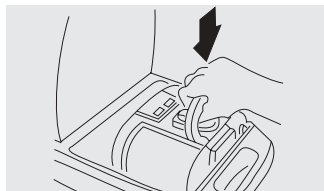
IT IS IMPORTANT TO REGULARLY WASH THE FILTER TO MAINTAIN PERFORMANCE.

Wash in warm water and leave to air dry. Do not use detergents as this can affect the performance of the filter.

CAUTION: THE FILTER MUST BE TOTALLY DRY BEFORE REPLACING INTO THE MACHINE.

Replacement filters can be purchased from our Replacement Parts Helpline Number 0870 167 6635.

- To reassemble insert the filter into the airbox and twist clockwise $\frac{1}{4}$ of a turn. Replace the airbox lid by locating the two tabs on the underside of the airbox (opposite side of handle) into the lid and clip into place.
- Slide the airbox back into the dust compartment ensuring that the front hook of the airbox is located into the slot provided **8**.
- Push the airbox fully down so that the safety lock **7** moves sideways. The safety lock stops the dust compartment from closing unless the airbox is fitted correctly.



DO NOT FIT THE AIRBOX WITHOUT THE FILTER BEING IN PLACE.

Cleaning the motor protection filter

The motor protection filter is accessible from the dust compartment only when the airbox has been removed first.

WARNING: NEVER USE THE APPLIANCE WITHOUT THE MOTOR PROTECTION FILTER INSTALLED, OTHERWISE DAMAGE TO THE MOTOR MAY OCCUR WHICH WOULD NOT BE COVERED BY THE GUARANTEE.

- 1 Open the flap on the filter cassette.
- 2 Take out the micro hygiene filter.
- 3 Wash in warm water and leave to air dry. **DO NOT USE DETERGENTS.**
- 4 Replace the dry filter and close the filter cassette.
- 5 Insert the airbox and close the dust compartment cover.

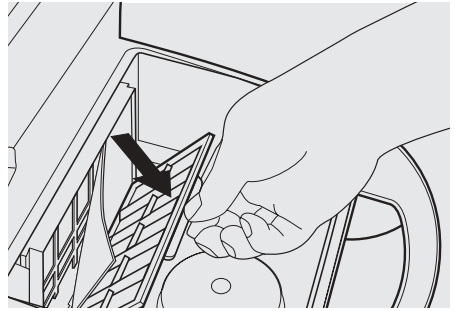
Recommendation

The micro hygiene filter should be cleaned when you have emptied the airbox 5 times.

Important

Ensure the filter is completely dry before reinserting into the machine.

Replacement filters can be purchased from our Replacement Parts Helpline Number 0870 167 6635.



Cleaning the exhaust air filter

The exhaust air filter cleans the air before it exits the vacuum cleaner.

Recommendation

The exhaust air filter should be cleaned when you have emptied the airbox 5 times.

Exhaust filter

- 1 The exhaust filter is located between the hinged section of the dust compartment cover. This filter simply lifts out as indicated.
- 2 Clean the filter by shaking it rigorously or by washing it in warm water and leave to air dry. DO NOT USE DETERGENTS.
- 3 Replace the dry filter back into your vacuum cleaner and close the cover.

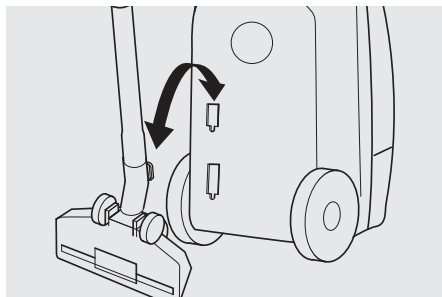
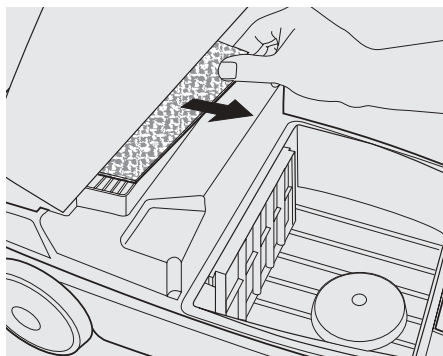
Important

Ensure the filter is completely dry before reinserting into the machine.

Replacement filters can be purchased from our Replacement Parts Helpline Number 0870 167 6635.

Storage

When not in use the vacuum cleaner can be stored in an upright position. To do this, rotate the floor nozzle until the lug on the back of the brush can be fitted into the tube park slot provided on the base of the appliance.



Cleaning and maintenance

Unplug from the mains before cleaning.

The dust compartment and all accessories can be cleaned using a damp cloth or a non-abrasive domestic cleaner and wiped dry.

To keep the underside of the floor nozzle clean, vacuum it at regular intervals using the crevice tool.

Helpline

If you have any difficulty with your appliance do not hesitate to call us. We are likely to be more help than the store from where it was bought. Please have the following information ready to enable our staff to help you.

- Name of product
- Model number as shown on the underside of the appliance.



Your three year parts & labour guarantee

It is important to retain the retailers receipt as proof of purchase. Staple your receipt to this back cover for future reference.

Please quote the following information if the product develops a fault. These numbers can be found on the base of the product.

Model no. Serial no.

All Morphy Richards products are individually tested before leaving the factory. In the unlikely event of any appliance proving to be faulty within 28 days of purchase it should be returned to the place of purchase for it to be replaced.

If the fault develops after 28 days and within 36 months of original purchase, you should contact the Helpline number quoting Model number and Serial number on the product, or write to Morphy Richards at the address shown. You will be asked to return the product (in secure, adequate packaging) to the address below along with a copy of proof of purchase. Subject to the exclusions set out below (1-5) the faulty appliance will then be repaired or replaced and dispatched usually within 7 working days of receipt.

If you suspect a fault, follow the simple checks detailed below before returning the appliance or calling the helpline.

- Check the filters for blockages.
- Check the tools for blockages.

If for any reason this item is replaced during the 3 year guarantee period, the

guarantee on the new item will be calculated from original purchase date. Therefore it is vital to retain your original till receipt or invoice to indicate the date of initial purchase.

To qualify for the 3 year guarantee the appliance must have been used according to the manufacturers instructions. For example, the filters must be cleaned regularly.

EXCLUSIONS

Morphy Richards shall not be liable to replace or repair the goods under the terms of the guarantee where:

- 1 The fault has been caused or is attributable to accidental use, misuse, negligent use or used contrary to the manufacturers recommendations or where the fault has been caused by power surges or damage caused in transit.
- 2 The appliance has been used on a voltage supply other than that stamped on the products.
- 3 Repairs have been attempted by persons other than our service staff (or authorised dealer).
- 4 Where the appliance has been used for hire purposes or non domestic use.
- 5 The guarantee excludes consumables such as the filters.

This guarantee does not confer any rights other than those expressly set out above and does not cover any claims for consequential loss or damage. This guarantee is offered as an additional benefit and does not affect your statutory rights as a consumer.

- This guarantee is valid in the UK and Ireland only.



Morphy Richards products are intended for household use only.

Morphy Richards has a policy of continuous improvement in product quality and design. The company, therefore reserves the right to change the specification of its models at any time.

morphy richards®

The After Sales Division
Morphy Richards Ltd, Mexborough
South Yorkshire, England, S64 8AJ

Helpline (office hours)
UK **0870 060 2604**
Republic of Ireland **1800 409119**